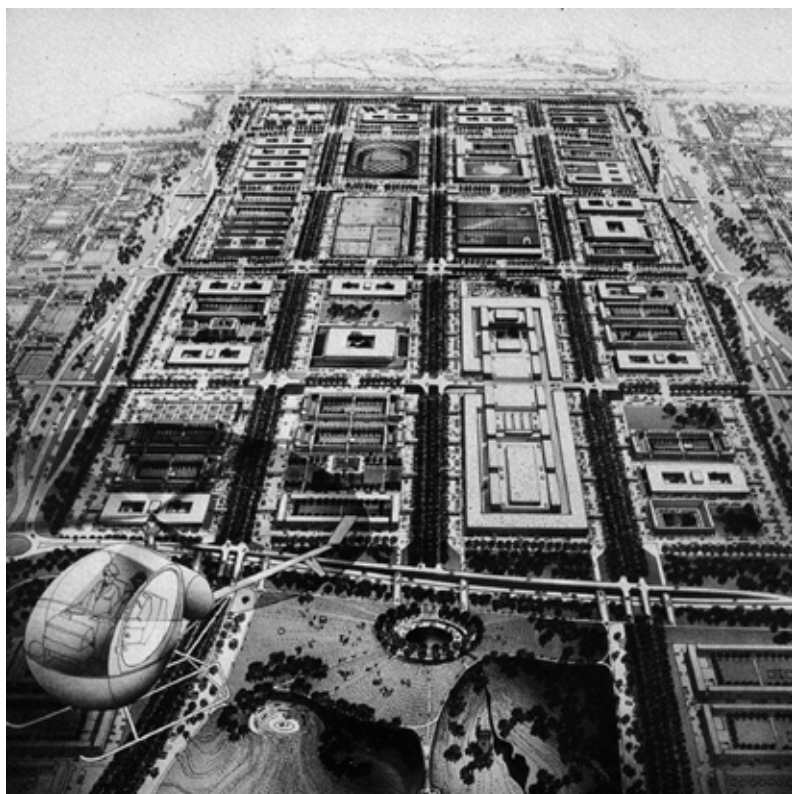


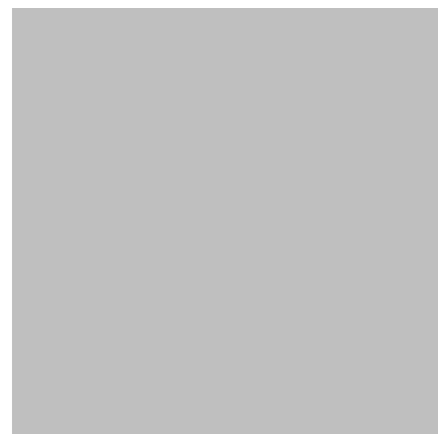
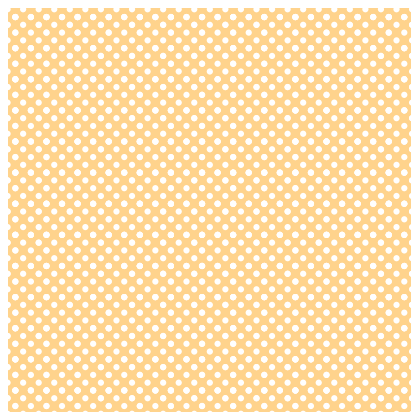
Future City

6 December 2013 –
5 January 2014



An exciting exhibition and events programme that looks back at the utopian origins of Milton Keynes in order to consider its future.

Helmut Jacoby, *Milton Keynes City Centre*, 1974



Future City

'London, Paris, New York, Milton Keynes' proclaimed an advert for the glamorous fashion house Nina Ricci. 'Wouldn't it be nice if all cities were like Milton Keynes!' exclaimed an iconic TV commercial featuring red balloons. These and other striking slogans from the 1980s formed part of an extensive campaign to sell the dream for the ideal city to its future inhabitants. The finest planners, architects and designers had been employed to deliver Milton Keynes, one of the greatest social experiments of its time. Influenced by the utopian ideals of Ebenezer Howard's Garden Cities of Tomorrow and the radical urbanism of Melvin Webber, the original Milton Keynes Masterplan of 1970 set out six goals:

- Opportunity and freedom of choice
- Easy movement and access
- Balance and variety
- The creation of an attractive city
- Public awareness
- Efficient and imaginative use of resources

Future City explores some of the early designs, drawings, models, photographs, paintings and general ephemera produced in the following years that aimed to realise these goals and were central to creating an identity for the new town. Alongside these displays is a community section and reading space including iconic marketing material from early MK and new contributions from local residents including submissions by Milton Keynes school pupils in response to a 'Design your MK Gallery' brief. This accompanies an insight into the work of architectural practice 6a who have been appointed to design the Gallery's ambitious expansion, with source material from their studio and elements related to previous projects. New photographs of the town by architectural photographer David Grandorge have been specially commissioned for this exhibition.

Long Gallery and Foyer

The new town of Milton Keynes was designated by a Government Order of 23 January 1967. The creation and development was overseen by Milton Keynes Development Corporation (MKDC). The starting point and guiding principles for the new town were set out in the Masterplan which was published in 1970 by the Development Corporation. This 'Green Book' officially called *The Plan for Milton Keynes* contained all the details for the proposed development of the new town.

On display in the Long Gallery is a selection of original drawings by Helmut Jacoby (1926 – 2005). Jacoby was the architectural draughtsman employed to portray the design for the city centre to the public. He worked with the Development Corporation for 6 years, providing visual consistency to the varied design aspirations of the new town's architects and planners.

The Development Corporation also commissioned artists to work in Milton Keynes and examples can be seen in the Gallery. Stephen Gregory (born 1951) was employed as an artist in residence from 1977-79 when Milton Keynes was still under construction. His works examine the building of the new town and celebrate its contemporary architecture. In 1982 Fionnuala Boyd (born 1944) and Les Evans (born 1945) were invited to Milton Keynes by the Development Corporation as artists in residence, and have lived and worked in the city ever since. Working from photographs, they created complex compositions in a distinctive realist style. Paintings by Boyd & Evans can be seen in the Long Gallery and in the Cube Gallery.

Other artists and architects such as Eugene Fisk and Andrew Mahaddie were also involved in creating a visual representation of Milton Keynes. Fisk (born 1938) came to Milton Keynes in 1980. During his year with the Development Corporation he published two publications illustrating the incorporation of historic settlements into a new town. Illustrations from these books are displayed in vitrines.

The architectural model of the city centre shows Milton Keynes as it was in 2003, while the model of Campbell Park shows the original plan for the park. The vitrines in the room display publications, articles, illustrations and plans from the early days of Milton Keynes' development, including *The Plan for Milton Keynes* from 1970 and a copy of a letter dated 11 January 1967 announcing that under the New Town Act of 1965, the area was designated as the site of a new town.

Furniture from the Development Corporation's famously yellow offices and slides by architectural photographer John Donat looking at buildings, industry and recreation are included as well as four maps for various years charting the development of Milton Keynes, from 1975 through to the present day. Artist Gareth Jones (born 1965), who grew up in Milton Keynes, produced the film *Looking for Milton Keynes*, 2011 which explores the evolving political and architectural landscape of the town.

Cube Gallery

In the centre of the room is a display of 3D and 2D 'Design Your MK Gallery' submissions from local school children, in which they imagine the future gallery building. A selection of books and materials are available for the public to browse and monitors showing iconic early TV adverts (The Wish, Red Balloon, Fishing Advert), and the Development Corporation archive footage (including 'The Past is Present' – a look at Milton Keynes from the point of view of someone moving to the area).

The quotes on the wall have been taken from two books: *This Place Has its Ups and Downs (or kids could have done it better)*, published by The Peoples' Press, 1977; a collection of children's impressions about life in Milton Keynes and *Postcards To The Future, to Ali and Lee, from the Children of Milton Keynes*, produced by Milton Keynes City Discovery Centre in 2007.

Some Day by Boyd & Evans depicts scenes from life in the new city of Milton Keynes while a vitrine displays a selection of preparatory sketches for *Fiction, Non-Fiction and Reference*, a vast 'mural' commissioned for, and still on display in Central Milton Keynes Library, a short walk from the Gallery.

The other vitrines and shelves contain memorabilia from the early days of Milton Keynes, showing promotional materials, welcome packs for new residents and ephemera donated by the public or on loan from the Milton Keynes City Discovery Centre (MKCDC). In one vitrine, *Betty's Story* by artist Haili Sun, and accompanying video work *Happy Here* contain interviews of individuals' experiences living in Milton Keynes. On the walls are photographs of early Milton Keynes life, promotional posters, including *Leisure*, 1971, by artist Philip Castle (born 1943), and five works produced for the Design Centre Exhibition in 1972 by artist Malcolm Fowler (1943 – 2012) relating to the six goals from the original Milton Keynes Masterplan (one of the works is missing).

Middle Gallery

MK Gallery has appointed 6a architects to design the ambitious extension to the original gallery that will more than double the gallery space and add much needed new facilities for education and community, eating and drinking and public events. In this room, 6a architects has assembled a collection describing the design process in previous projects, which is never entirely visible in the final building but essential in the development of the project. It combines origins and references that the architects return to in books, films, artworks and images of completed buildings with the debris of the design process; the models, material samples and prototypes produced during a project. Many of these objects are not representations of the final work but some of the stepping stones leading from first thoughts to fully realised buildings.

The collection also represents a specific approach to architecture in which images and materials drawn from the site and surroundings are used to create new social and environmental narratives particular to each project. The practice transforms evidence of past, present and future conditions to make subtle new architectural forms and has been described as 'architect detectives' or 'time travellers'. 6a's buildings engage users directly with their locality through material, reference and experience.

The English Garden City met American urban theory in the 1960s to create Milton Keynes. Fifty years later, the landscape has matured and the grid, symbolic of a new democratic and open spatial structure, has been challenged in some places yet remains heroically pure in others. The optimistic modernity at the heart of Milton Keynes' original vision – both built and unbuilt - is being reinterpreted to create a building on the threshold of city and park. It responds to an expanding contemporary cultural programme, one that extends beyond the gallery walls into the education, leisure and life of the city. The images on the walls of the gallery by photographer David Grandorge, a longtime collaborator with 6a, are part of a process to find the seeds of a new twenty first century Milton Keynes, now firmly rooted in the English landscape.

6a architects was founded in London in 2001 by Stephanie Macdonald and Tom Emerson after meeting as students at the Royal College of Art. The practice, which now has a team of 20 people from 12 countries, has completed a number of galleries including Raven Row in Spitalfields, East London, the South London Gallery and the Fashion Galleries at the Victoria & Albert Museum. Alongside MK Gallery, the practice designs cultural, residential and educational buildings. Construction is due to start in January on a studio for photographer Juergen Teller and in June for new halls of residence at Churchill College in Cambridge.

As MK Gallery embarks on its expansion plans, with the new building due to open in 2017 to coincide with the city's 50th anniversary, this exhibition, and the accompanying events, aim to provide an invitation and focal point for discussions around the renovations, improvements and animation of the city centre.

Events

Programme

See website for full event listings
www.mkgallery.org/events

Talks & Tours

Visual Access Tour

Monday 9 December / 2pm / Free

An Audio Described tour of *Future City* led by Learning Coordinator, Hannah Gaunt.

The tour will last about an hour, and will be friendly and informal; you don't need any specialist knowledge of art. At the end there is time to ask questions while enjoying free tea and biscuits.

To pre-book your free place please call 01908 558 305 or visit the Information Desk.

Why we came to Milton Keynes

Thursday 12 December / 6.30pm / Doors open 6pm / Free*

A series of short talks by key figures recalling the energy and excitement of early Milton Keynes.

Speakers include:

- David Lock (Chair), Town Planner
- Ken Baker, Architect
- Lizzie Bancroft, Head Teacher
Loughton Manor First School
- Boyd & Evans, Artists
- Malcolm Brighton, Entrepreneur
(formerly MK Development Corporation)
- Robert de Grey, Architect
- Neil Higson, Landscape Architect
- Bob Hill, (formerly MK Development Corporation)
- Peter Howard, Architect
- Roger Kitchen, Arts, heritage and community
development consultant
- Roy Nevitt, Founding Director,
Stantonbury Campus Drama
- Iain Smith, Architect
- Derek Walker, Architect

What Does our Future Look Like?

Thursday 19 December / 6.30pm / Doors open 6pm / Free*

A series of short talks envisaging the future of Milton Keynes by people in positions of responsibility.

Speakers include:

- Cllr Rebecca Kurth (Chair), CMK Town Council
- Cllr Debbie Brock, Milton Keynes Council
- Theo Chalmers, Chairman, Urban Eden
- John Duggan, Chairman,
Milton Keynes Development Partnership
- Tom Emerson, Architect, 6a
- David Foster, Chief Executive, the Parks Trust
- David Hill, Chief Executive, Milton Keynes Council
- Cllr Linda Inoki, Xplain
- Gerd Kortuem, Professor of Computing,
Open University
- Mary Malcolm, Deputy Vice Chancellor,
University of Bedfordshire
- Cllr Pete Marland, Milton Keynes Council
- Cllr Douglas McCall, Milton Keynes Council
- Stuart Turner, Architect
- Julia Upton, Chief Executive,
Milton Keynes Community Foundation.
- Pete Winkelman, Chairman, Milton Keynes Dons

* Events are free but must be pre-booked online via Eventbrite

With thanks to all the individuals and organisations who have made this exhibition possible, including 6a, Milton Keynes City Discovery Centre, The Living Archive, Milton Keynes Council, Buckinghamshire County Museum and The Open University.

Thank you to the following individuals for their contribution to the Cube Gallery: Pupils from Deanshanger Primary School, Slated Row School and Swallowfield School; Ms Christine Behrendt, Mark Coster, Marjorie Mackintosh, Sue Malleson, Helen Mayes, Dave Quayle, Suzan St Maur and Haili Sun.

Founding Corporate Partners

David Lock Associates
25 years of Town Planning and Urban Design



Exhibition supporters



Fred Roche Foundation

info@mkgallery.org
www.mkgallery.org
T 01908 676 900